

User Manual

Navitel Navigator update center



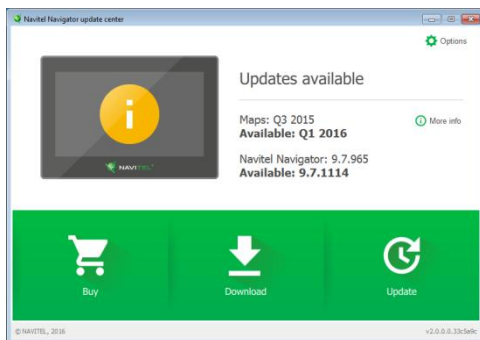
NAVITEL[®]

© 2016 NAVITEL s.r.o. All rights reserved.

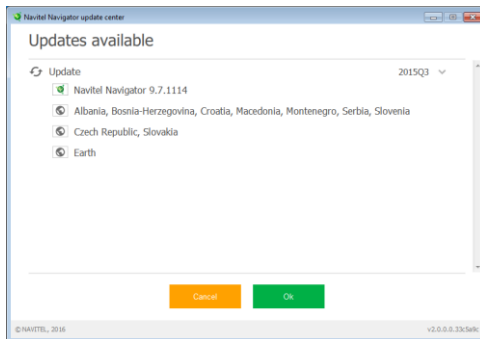
The content of this Manual, as well as any demo materials, are the sole proprietorship of the NAVITEL s.r.o. Any commercial use of this Manual may be carried out only with written permission from NAVITEL s.r.o.

-
1. Install Navitel Navigator Update Center on your PC.
 2. Connect your device to the PC as a USB Flash Drive/Mass Storage.
 3. Run Navitel Navigator Update Center.

If the device is properly connected, the program will detect it.



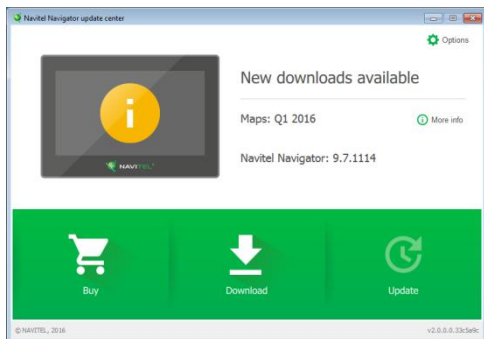
4. If updates are available, Navitel Navigator Update Center will suggest that you update your Navitel Navigator and/or maps.



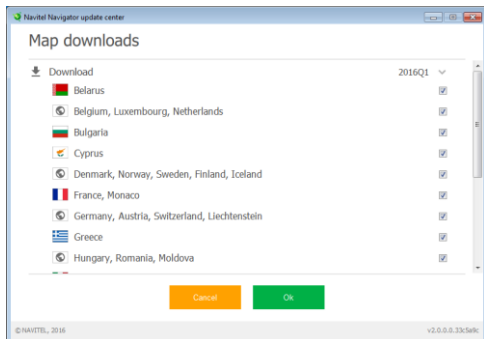
Keep in mind that the old maps will be deleted during the update. To continue, press "Update", then "OK".

5. Navitel Navigator Update Center will download and install the updates on your device.
-

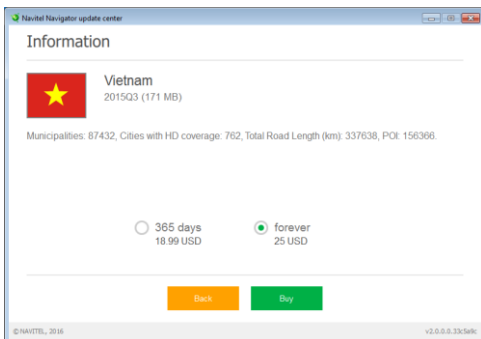
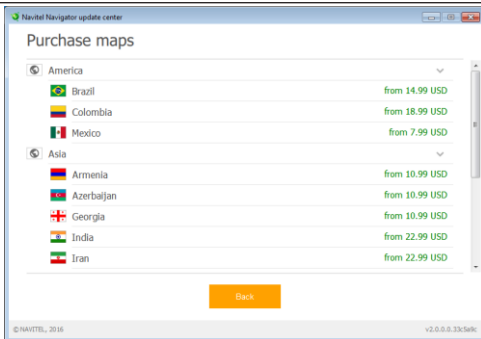
6. After updating, you can download or buy additional maps by pressing "Download" or "Buy" respectively.



7. To download purchased maps, mark the ones you need in the list and press "OK".



8. To buy a map, press on the entry corresponding to them ap you want to buy, select subscription length and press "Buy".



9. Run Navitel Navigator on your device.



© 2016 NAVITEL s.r.o. All rights reserved.

The content of this Manual, as well as any demo materials, are the sole proprietorship of the NAVITEL s.r.o. Any commercial use of this Manual may be carried out only with written permission from NAVITEL s.r.o.